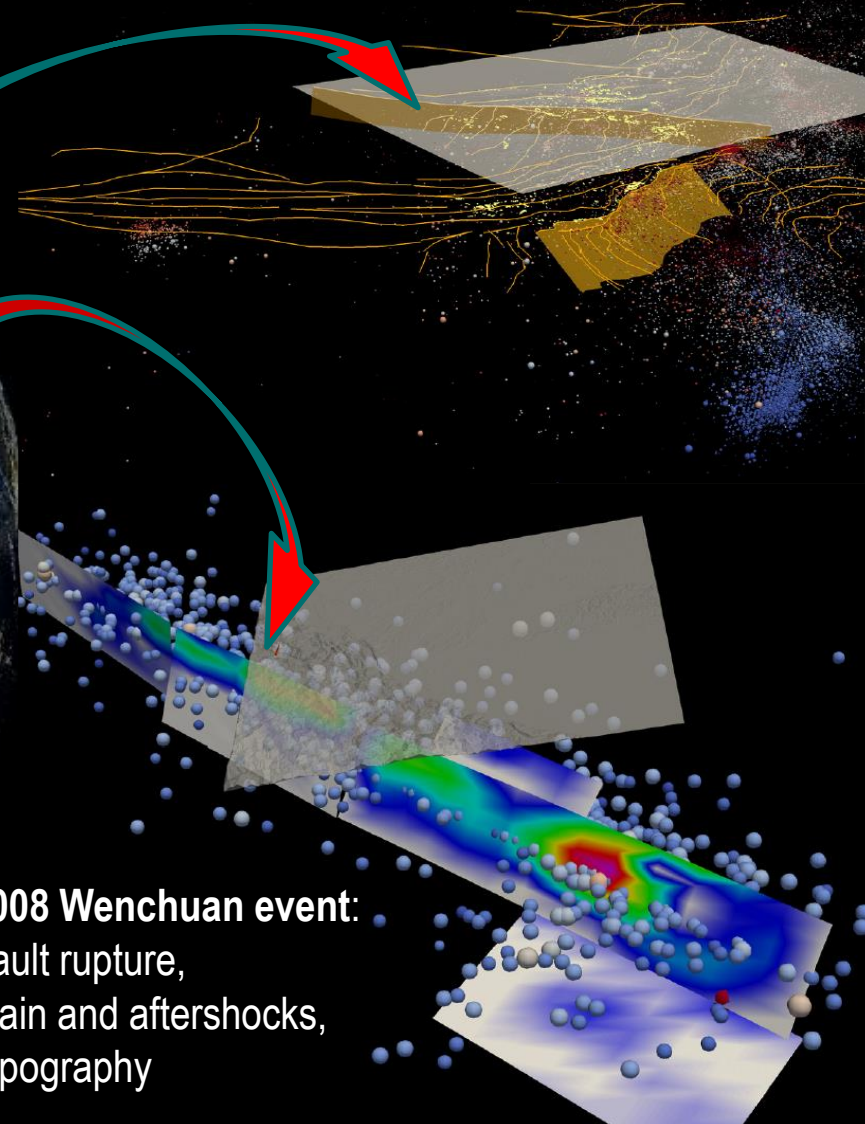


# Models will soon be connected to a Virtual Globe with fault models, earthquake hypocentres...

Virtual Globe  
and seismicity

Tien Shan and Pamir: Faults, seismicity, topography



2008 Wenchuan event:  
Fault rupture,  
main and aftershocks,  
topography

# Visualisation .. Today!

3D...+ Time ...4D

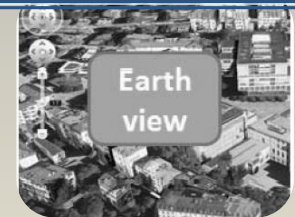
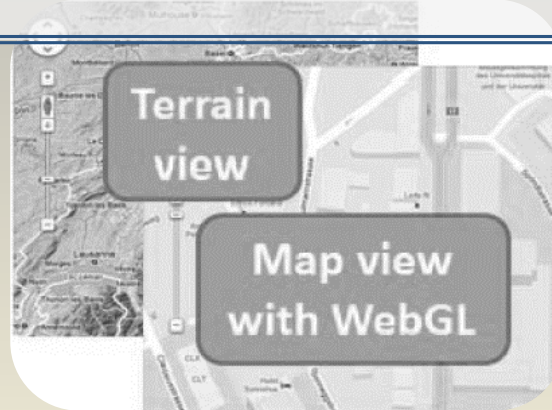
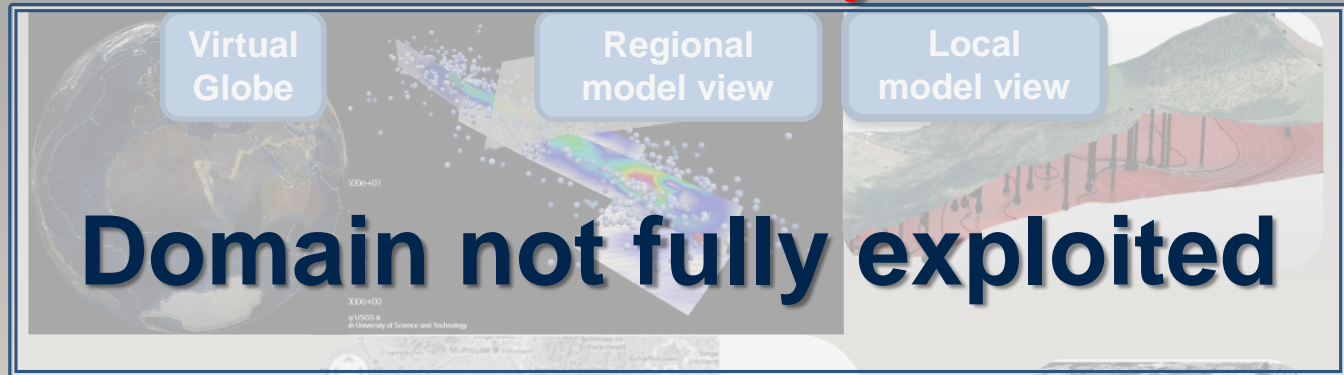
Dimension

2D

abstract

Level of realism

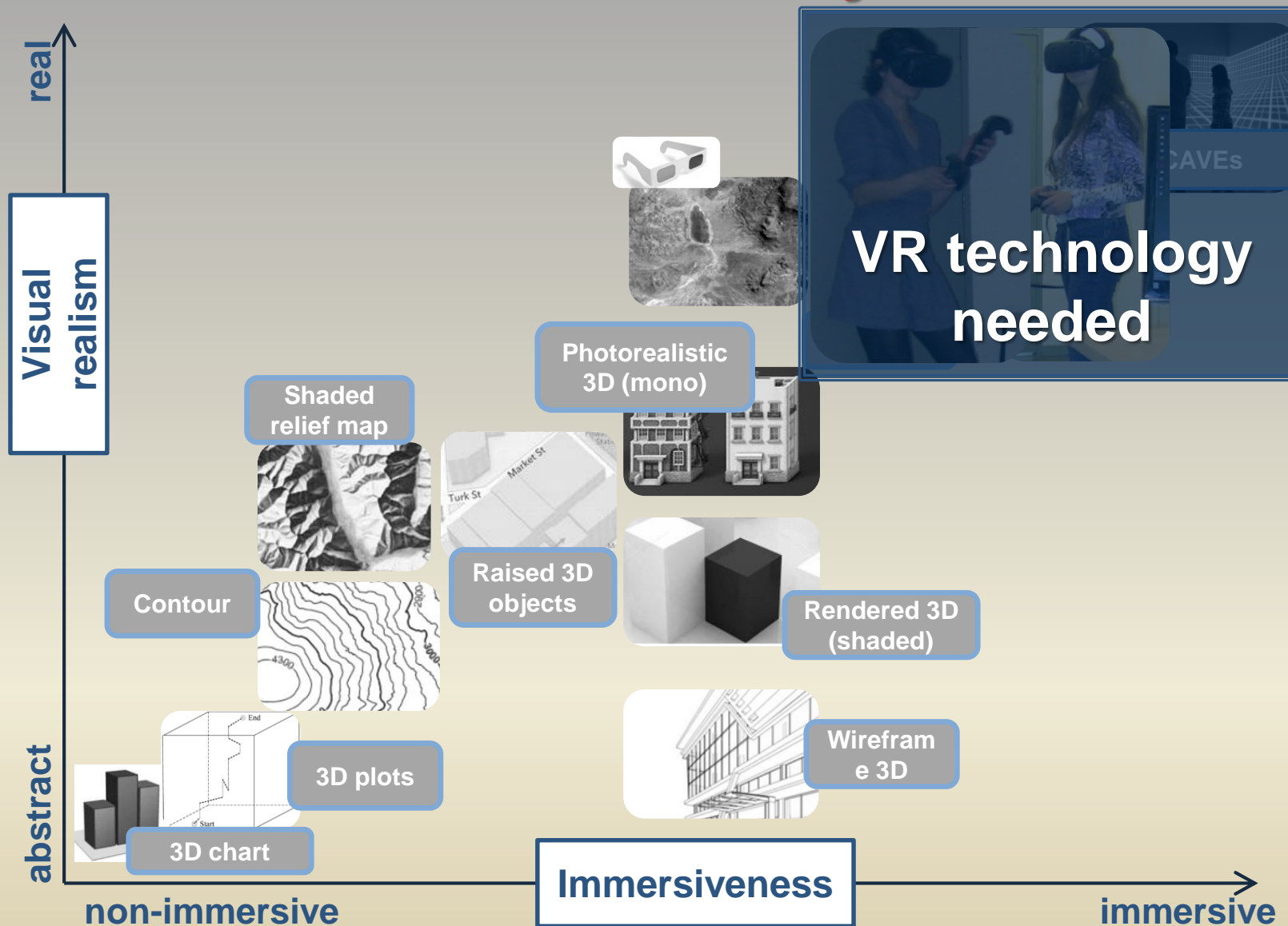
real



Modified from

Boér, A., **Çöltekin, A.**, & Clarke, K. C. (2013). Evaluating Web-based geovisualizations online: A case study with abstraction-realism spectrum in Focus. In *International Cartographic Conference, ICC 2013, Dresden, Germany*. Dresden.

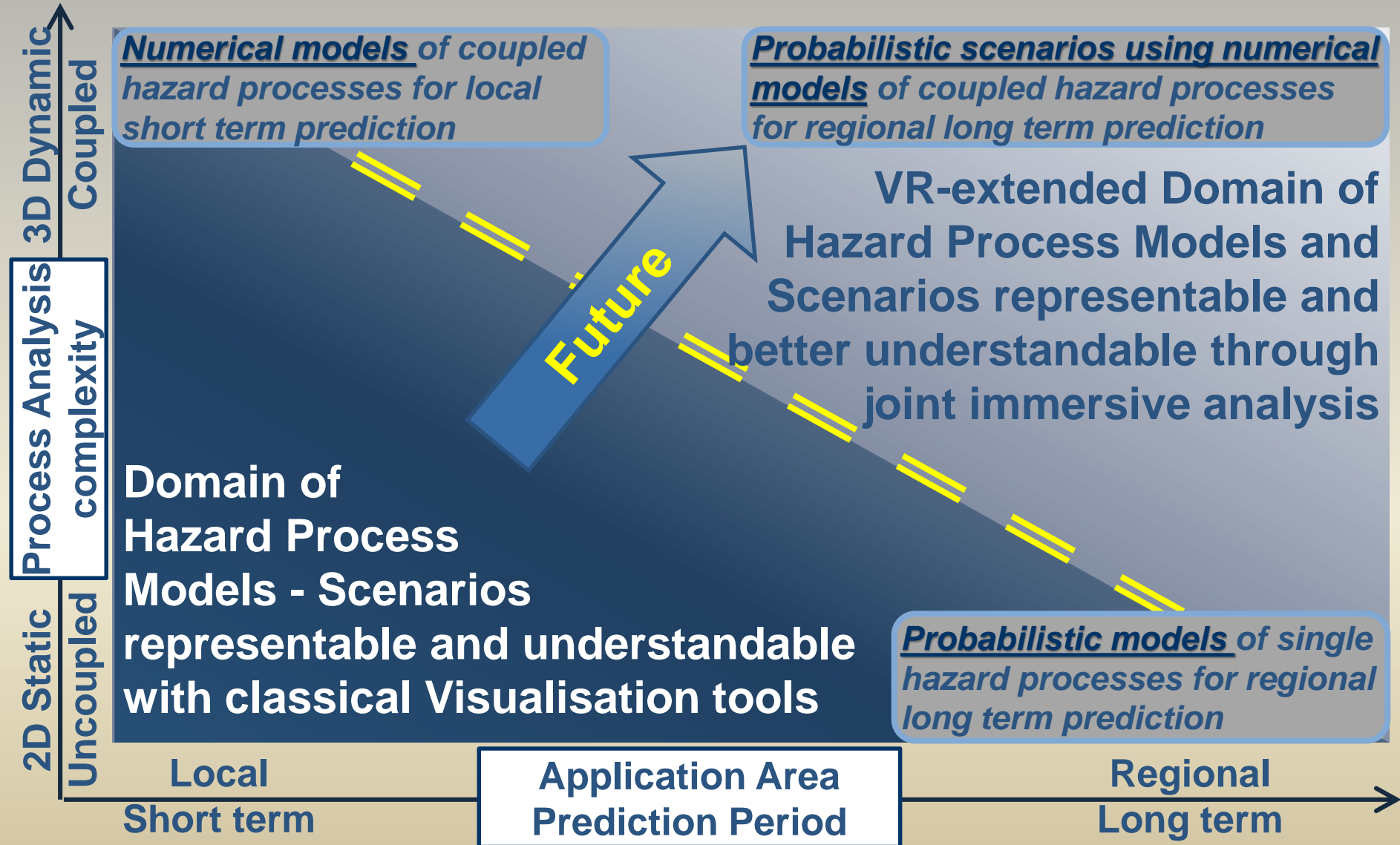
# Visualisation .. Today!



Modified from

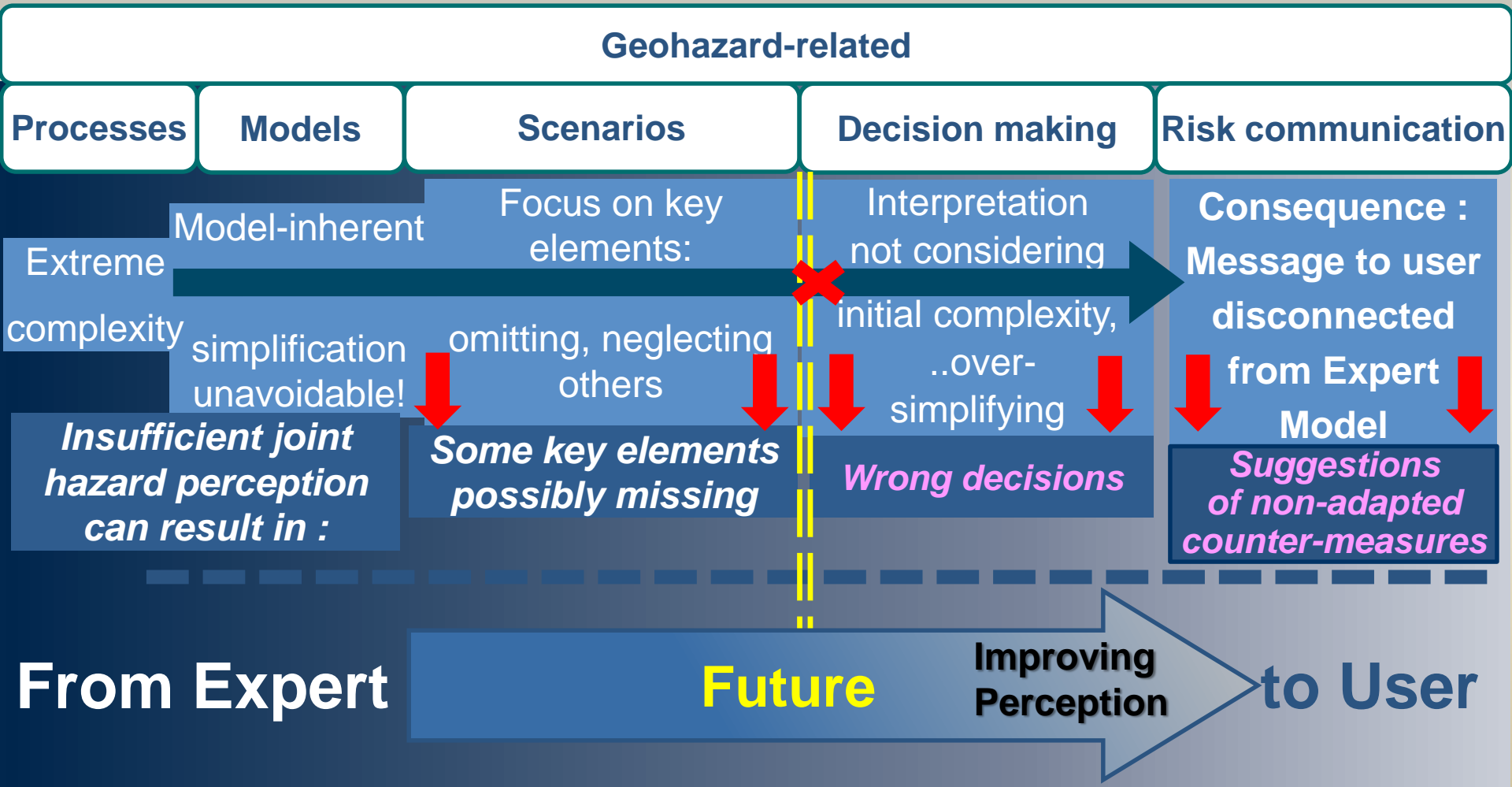
Boér, A., **Çöltekin, A.**, & Clarke, K. C. (2013). Evaluating Web-based geovisualizations online: A case study with abstraction-realism spectrum in Focus. In *International Cartographic Conference, ICC 2013, Dresden, Germany*. Dresden.

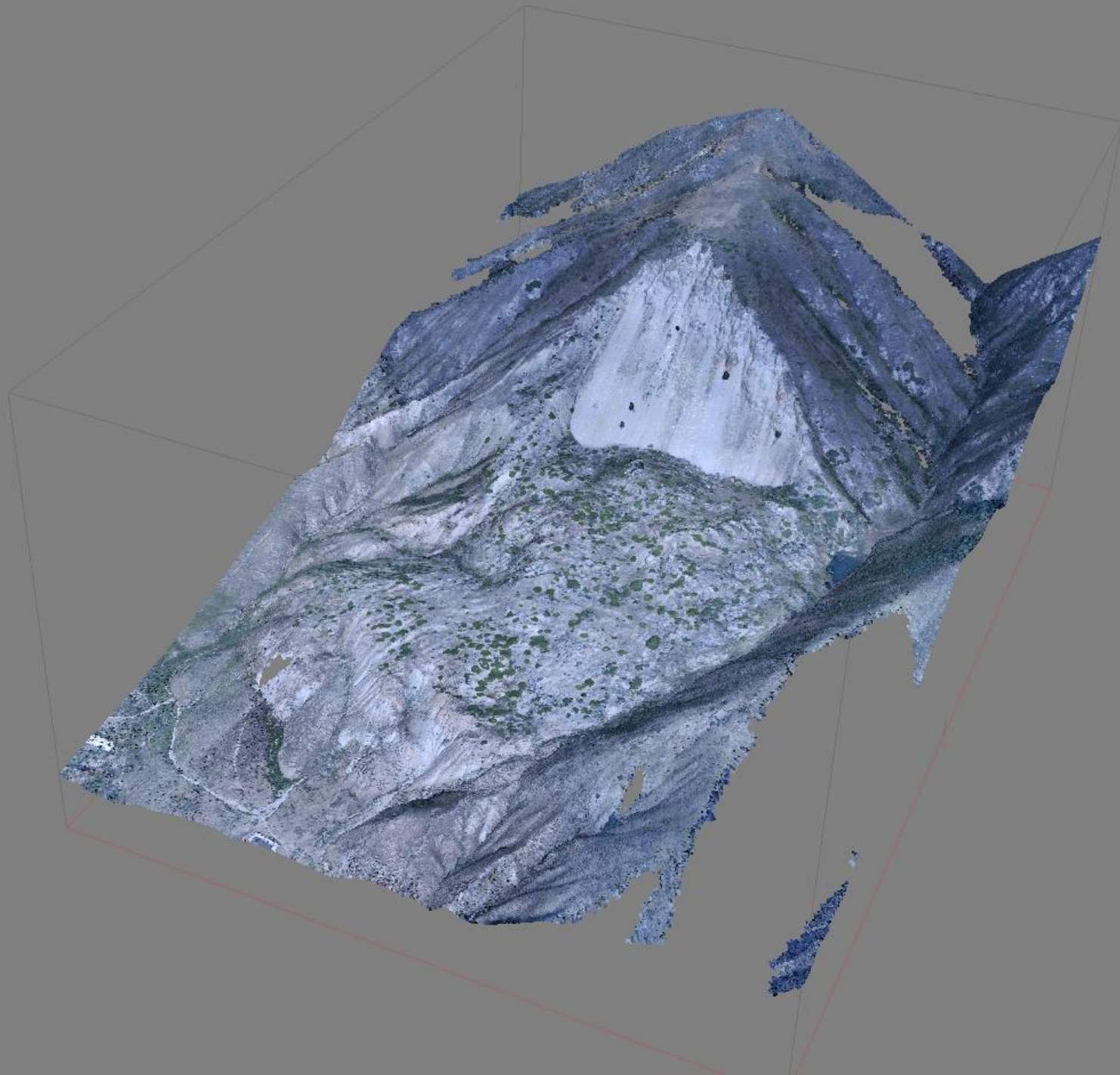
# Serious efforts needed to be able to work in 3D+time .. at regional and local scale. ...



# Serious efforts needed to be able to work in 3D+time .. at regional and local scale. ...

## ... to finally improve risk perception AND communication





# Examples of local complex expert models : required inputs : surface + subsurface

3D geophysical model for 3D elasto-dynamic analysis

