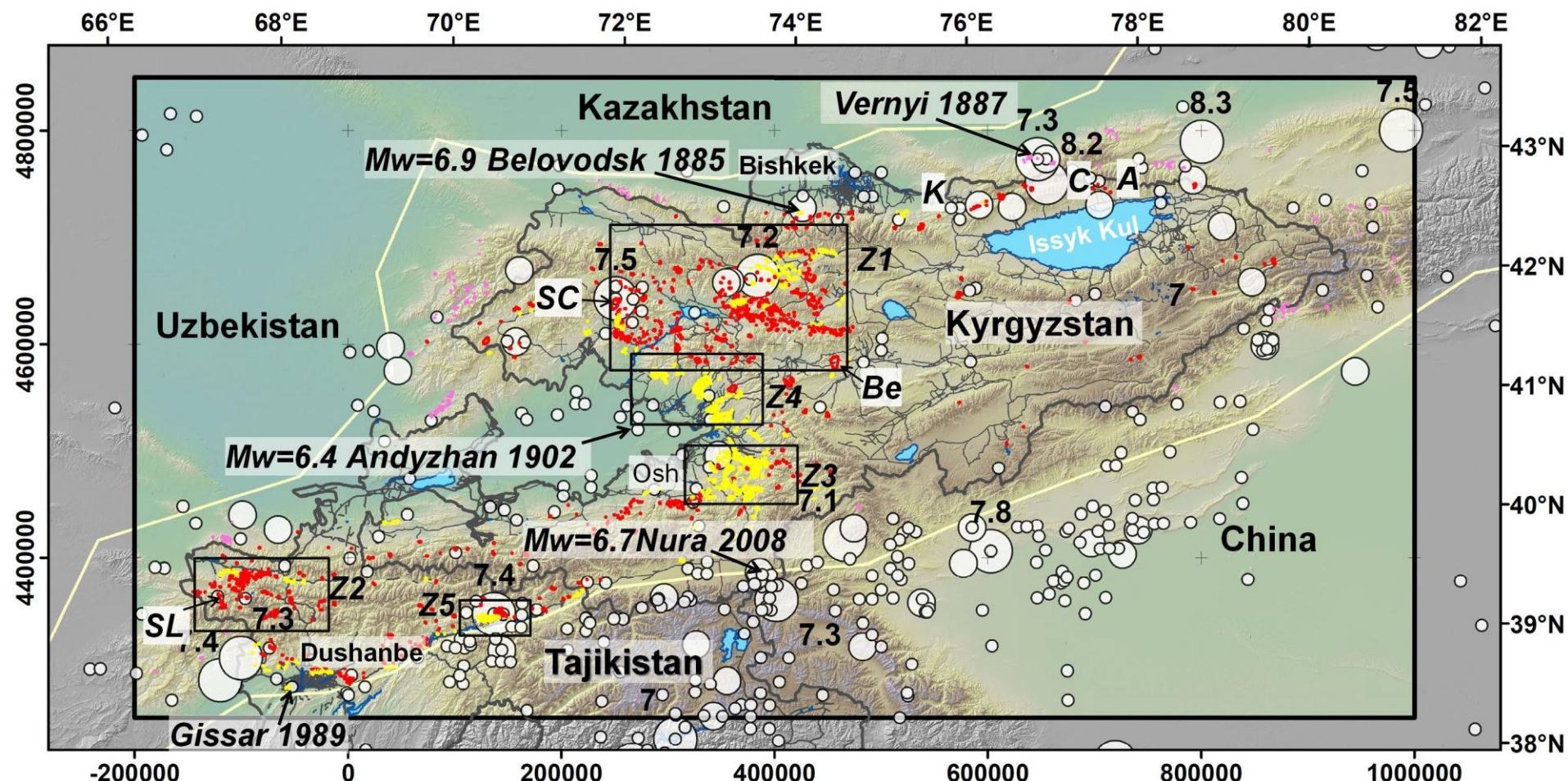
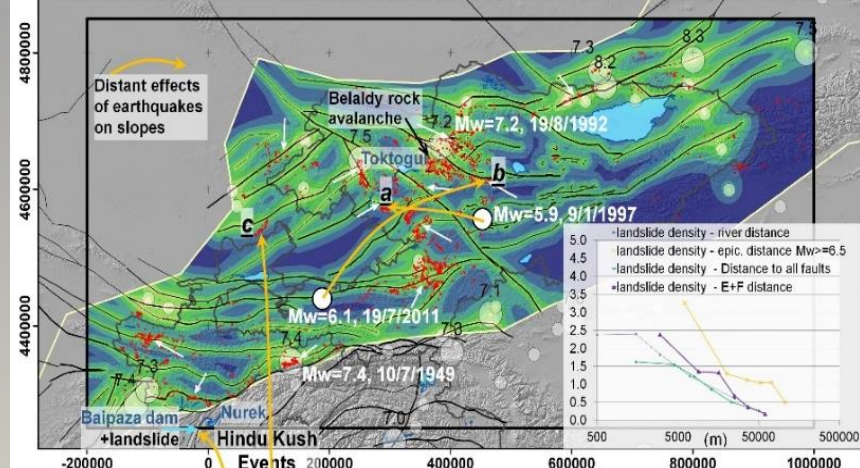


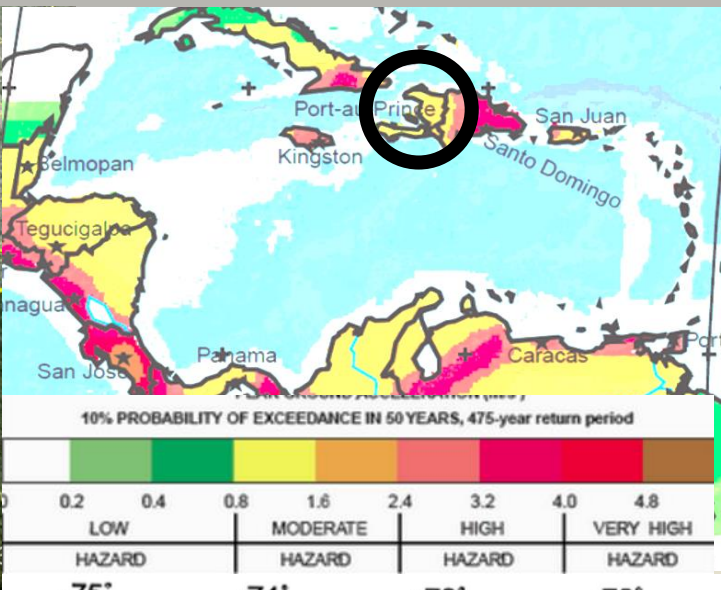
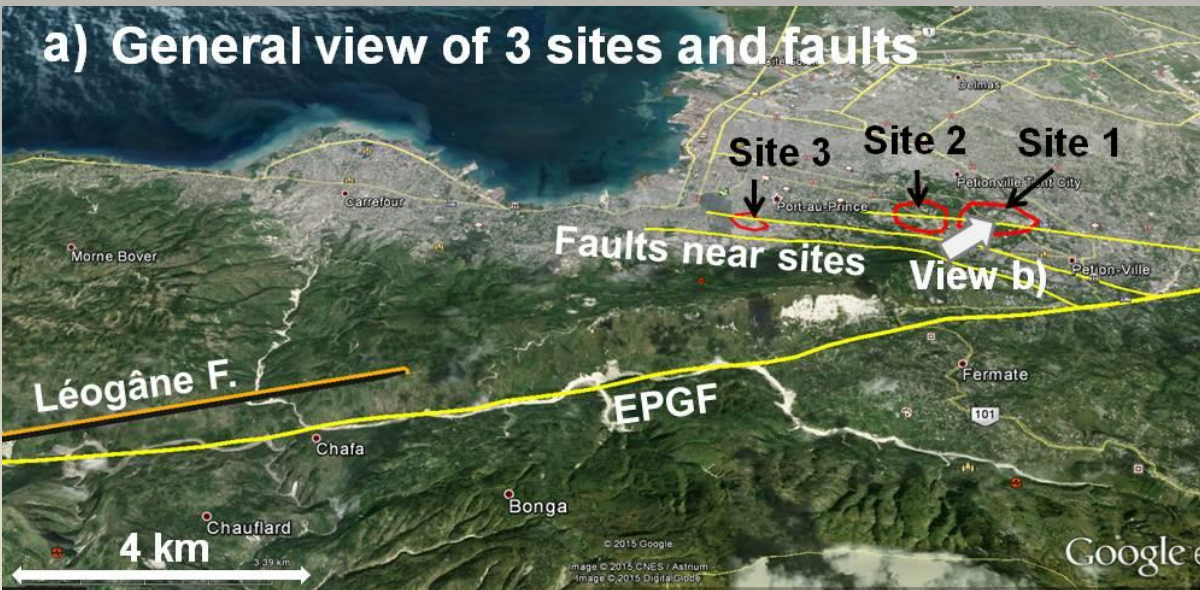
# Examples of regional complex expert models: NOW: Pure 3D (time information being implemented)



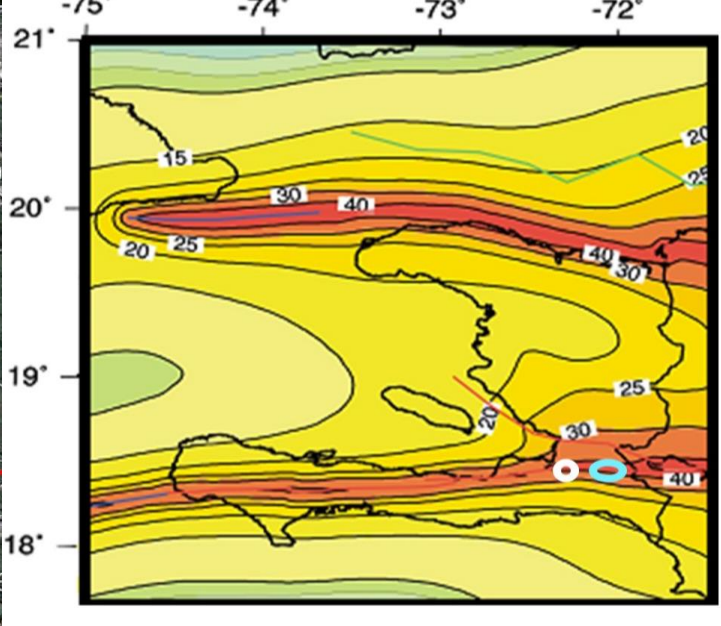
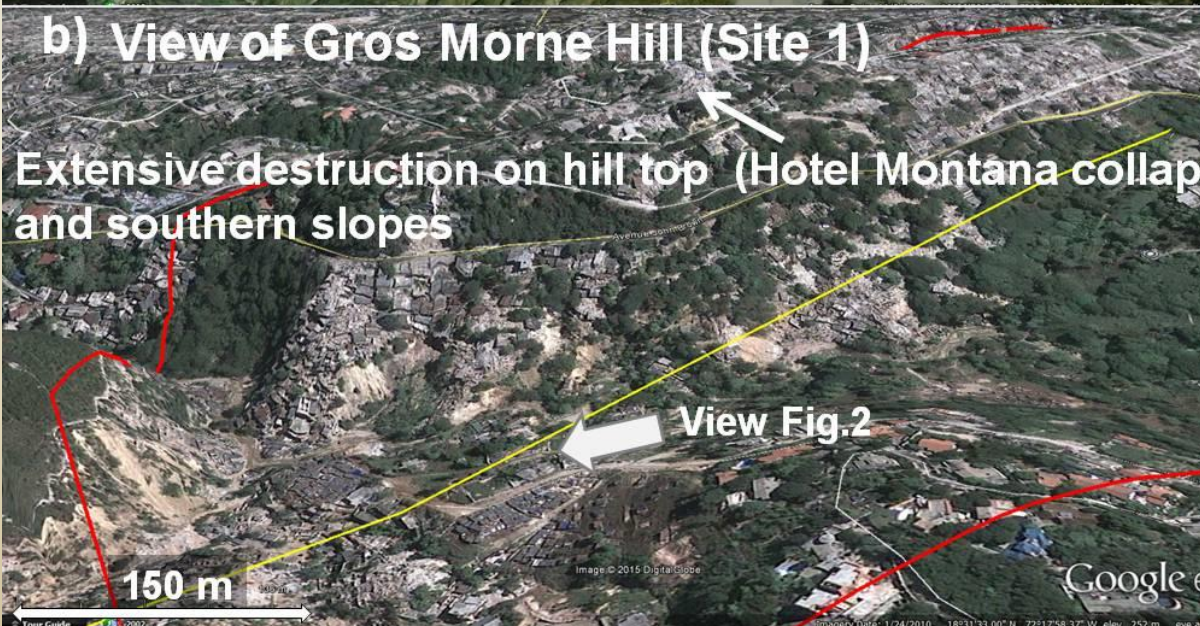


# Haiti – earthquake risk assessment and perception : new Belgian Project proposal

a) General view of 3 sites and faults



b) View of Gros Morne Hill (Site 1)

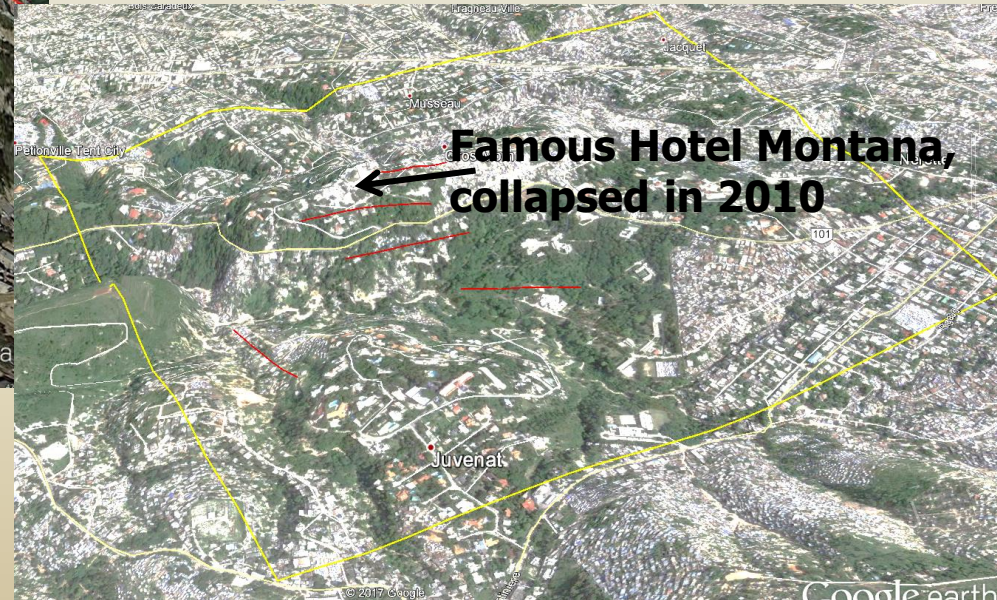
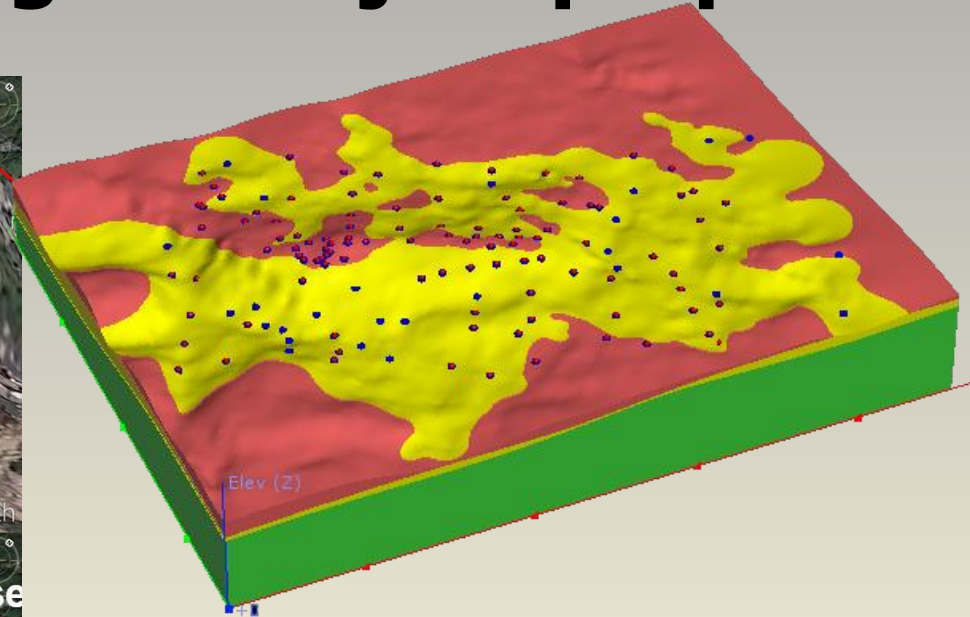


# Haiti – earthquake risk assessment and perception : new Belgian Project proposal

a) Pre-event view (8/26/2009, from SE) of Western part of site 1



b) Post-event view (1/25/2010, from SE) of Western part of site 1: ground/slope failure, building collapse



# Haiti – earthquake risk assessment and perception : new Belgian Project proposal

